

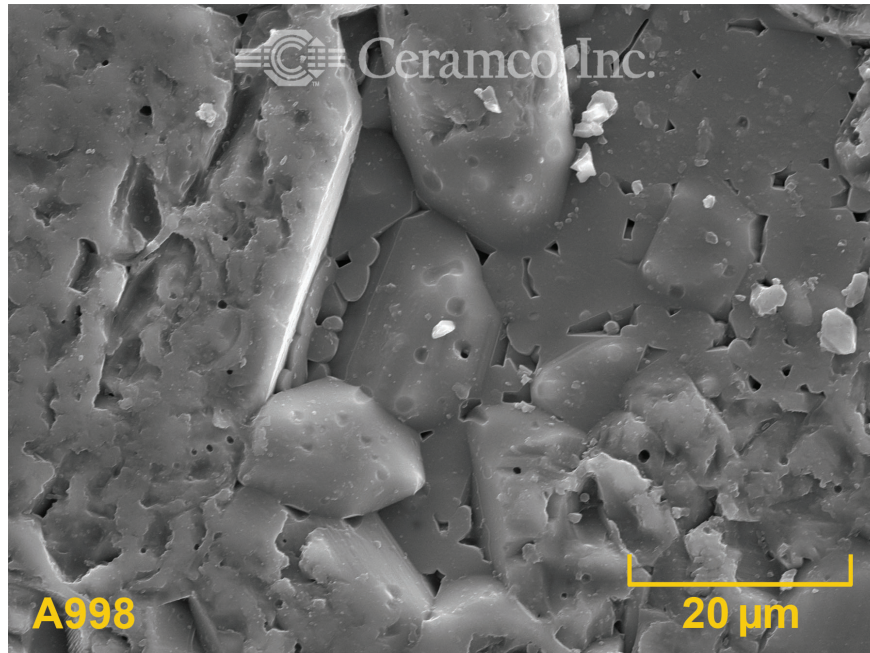


Ceramco, Inc.

Manufacturing OEM Ceramic Parts of Complex Geometries

Material Certification Reference

Date: December 9, 2019
Material: A998 (Alumina formulation)
Process: LPIM - Low Pressure Injection Molding
Microstructure:



Electron Microscope, Scanning- Tescan Lyra3 GMU FIB SEM, University of New Hampshire

Composition:	Oxide	wt %
	Na ₂ O	0.030828
	SiO ₂	0.030777
	Fe ₂ O ₃	0.0123
	CaO	0.034289
	MgO	0.050392
	Ga ₂ O ₃	0.00584
	B ₂ O ₃	0.002104
	Trace	0.0007
	Al ₂ O ₃	99.83277
	Total	100.00

The number of digits after the decimal point do not indicate the degree of accuracy.

The accuracy of these data are +/-0.05 %

Chemical composition data are from actual lot(s) of raw material as received from their source(s). Lots presently in production last updated as of the date above. Information on all lots are retained for traceability. You must request a Material Certification at the time of order to accompany shipment(s).

For more information about this material, or any other material, its certification, or process, please contact us.

[1467 E Main St • Center Conway NH 03813-4169 USA](https://www.ceramcoceramics.com)

T: +1 (603) 447-2090 • F: +1 (603) 447-3906 • oem.parts@ceramcoceramics.com

www.ceramcoceramics.com